



# **Manual: Compatibility and PopUp Blocker Settings**

September 2017

# Table of Contents

**1 COMPATIBILITY SETTINGS .....3**  
**2 POP-UP BLOCKER SETTINGS .....7**

# 1 Compatibility Settings

On the top right-hand side of the screen, select the "Tools" icon.

Select the "Compatibility View settings" option.

The screenshot shows an Internet Explorer browser window. The address bar displays the URL <http://197.98.24.143/etqa/start.asp>. The page content includes a header for "ETQA - Learnerships" with user information: "User Name : Jane Katende", "Logged on as : Administrator", and "Seta Name : TETA". Below this is a navigation menu with links: PERSON, ORGANISATION, PROVIDER, EMPLOYER, MODERATOR, ASSESSOR, LEARNER, VERIFIER, LEARNERSHIP, PROGRAMME, GRANTS, TRADE TEST OFFICER, AGREEMENT, PERMISSIONS, IMPORTS, MAINTENANCE, REPORTS, CUSTOM REPORTS, INTERNAL REPORTS, SAQA REPORTS, HOME, and EXIT. A "System Usage" bar chart is visible, showing data for "Today" and "10 days ago". The "Tools" menu is open on the right side, and the "Compatibility View settings" option is highlighted with a red rectangle.

| Time Period | Usage |
|-------------|-------|
| Today       | 40+   |
| 40+         | 40+   |
| 40+         | 40+   |
| 13          | 13    |
| 32          | 32    |
| 40+         | 40+   |
| 40+         | 40+   |
| 40+         | 40+   |
| 10 days ago | 40+   |

## Compatibility View Settings



### Change Compatibility View Settings

Add this website:

Add

Websites you've added to Compatibility View:

Remove

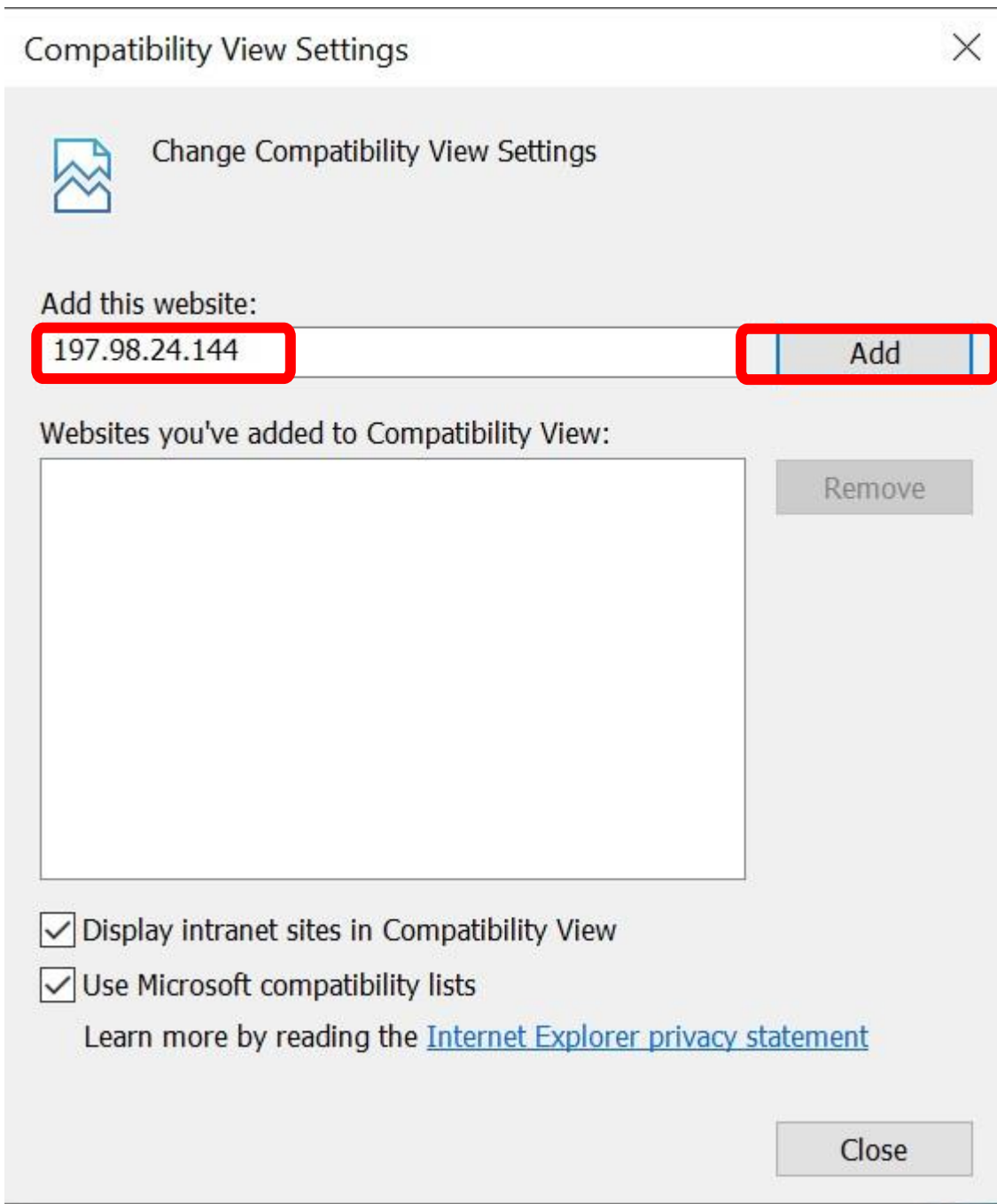
Display intranet sites in Compatibility View

Use Microsoft compatibility lists

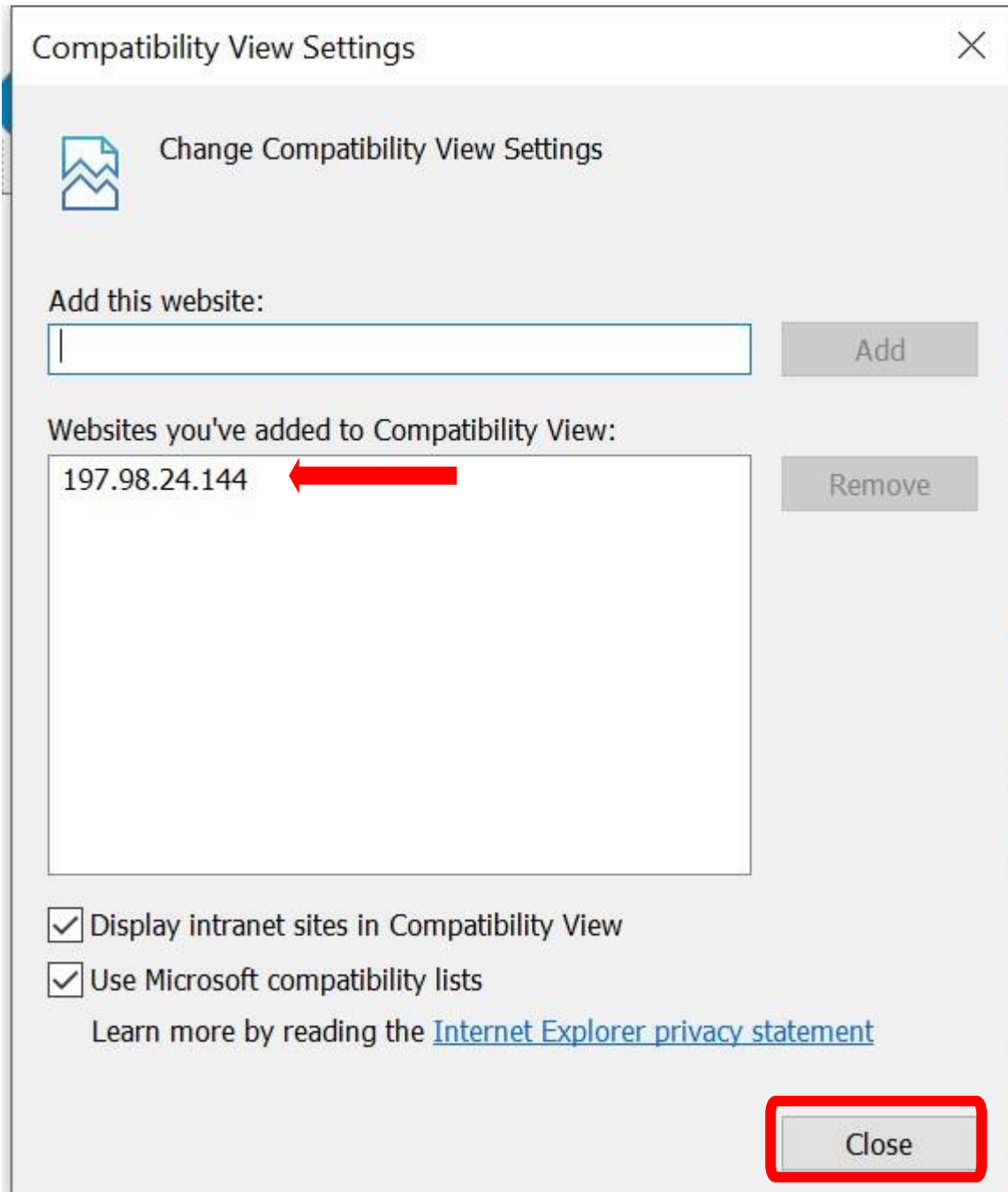
Learn more by reading the [Internet Explorer privacy statement](#)

Close

Under the field "Add this website", the address of the page will be display that you are working on in the text box. Select the "Add" button.



After you selected the "Add" button, the address will reflect in the larger text box as per below screenshot. Select the "Close" button

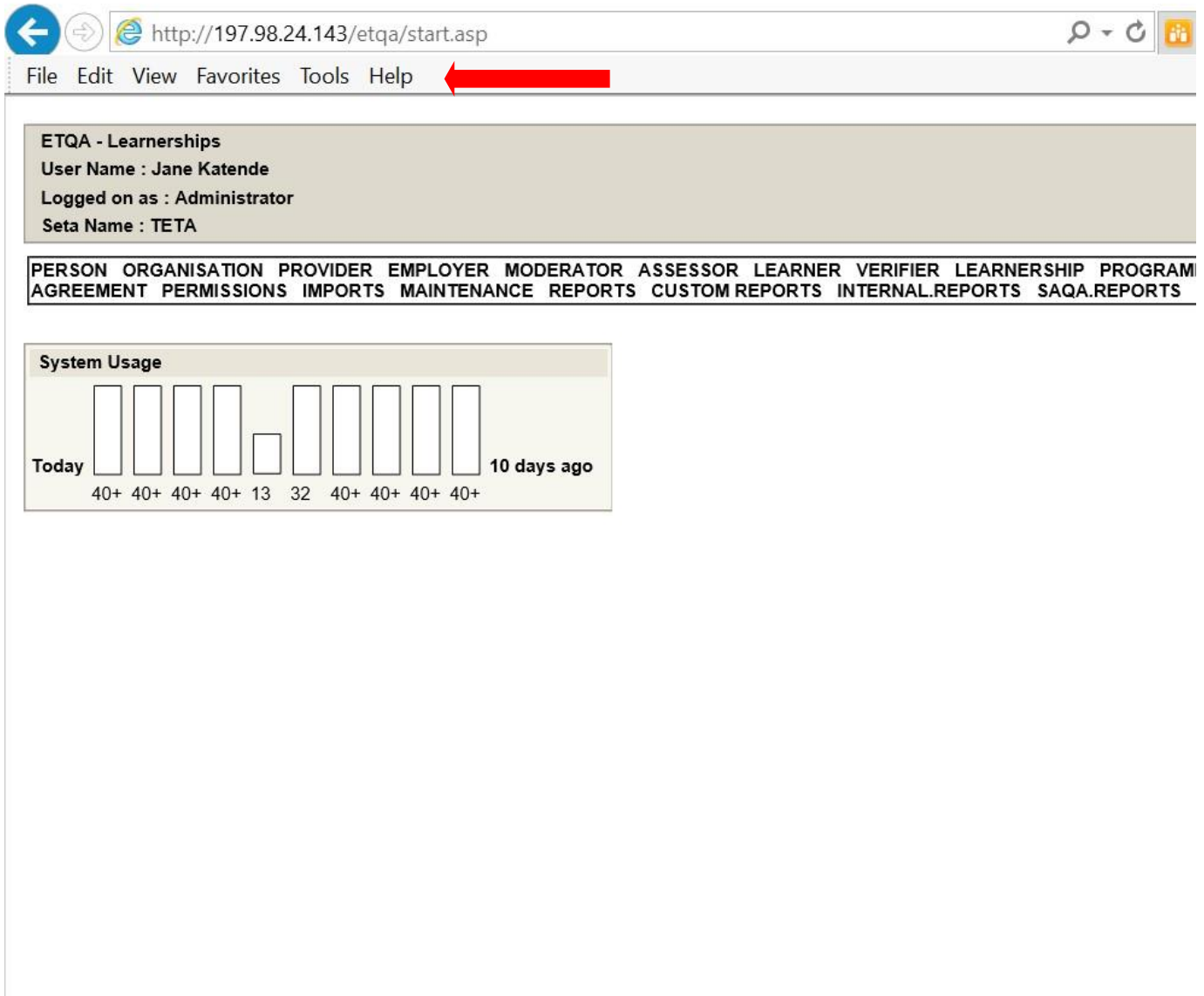


After you have selected the "Close button", wait for the page to refresh before moving on to the next step, checking "Pop-up blocker" settings.

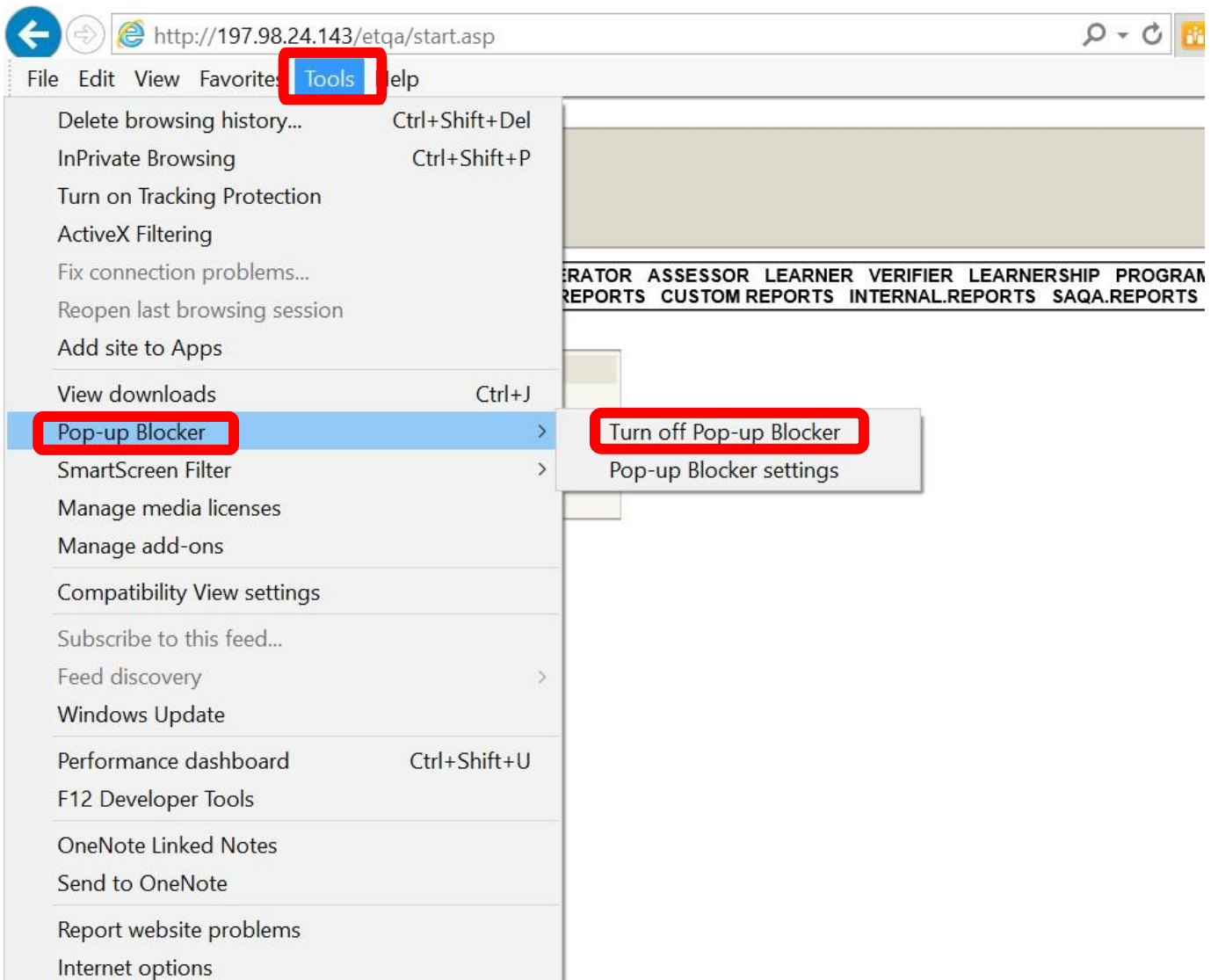
## 2 Pop-up Blocker Settings

On the top left hand side of the screen, just below the address bar, there is a menu bar with "Tools" being one of the options

**\*If there is no Menu bar, select the "ALT" key on your keyboard and it should reflect\*.**



Once you have selected the "Tools" option, hover over the "Pop-up blocker" option It will say "Turn Off pop up blocker".

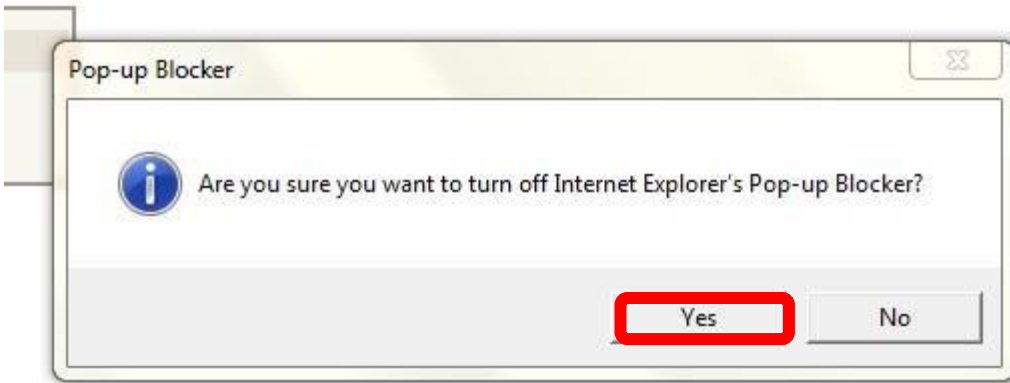


Select the "Turn Off Pop up blocker option". A prompt will pop up:

**"Are you sure you want to turn off Internet Explorer's Pop-up Blocker?"**

Select the "Yes" button as per below screenshot





Now when you go back to `Tools`^`Pop up blocker`, the option must display `Turn on Pop up blocker`.

This means that the feature that blocks pop-up windows on the application has been turned off and you should be able to view them.

